

54Mbps Wireless Broadband Router



The PLANET WRT-414 is an 802.11g compliant Wireless Broadband Router that is designed for sharing Internet connection to all LAN and WLAN clients at the same time. It supports 64/128-bit WEP (Wired Equivalent Privacy), WPA-PSK, WPA, WPA2 Encryption and MAC/IP filter access control for securing wireless network connection. Not only AP mode, but also AP Client, Bridge and WDS mode are supported. The WRT-414 provides more flexibility for users when they establish wireless network.

The WRT-414 allows you to setup trigger ports for special applications, and utilizes Internet services smoothly. Furthermore, the SPI (Stateful Packet Inspection) firewall protects your Intranet PCs from unauthorized access and many kinds of DoS attacks from the Internet. The WRT-414 can also alert you via e-mail immediately if any unusual response happened. The functions of Virtual Server and DMZ help you to setup your servers in the Intranet but still provide services to the Internet users. QoS support can classify bandwidth usage in order to meet time-critical applications. Administrators may define QoS rules by traffic type, source/ destination IP, communication port numbers to take full advantage of network bandwidth.

The WRT-414 provides a total solution for the Small and Medium-sized Business (SMB) and the Small Office/Home Office (SOHO) users, gives you an instant network today and the flexibility to handle tomorrow's expansion and speed afterward.

KEY FEATURE

- Compliant with 802.11g/802.11b standard
- Allows multiple users to share a single Internet line
- Internet Access via Cable or xDSL modem
- Accesses Private LAN Servers from the Public Network
- AP/AP Client/WDS/Bridge modes supported
- Supports 64/128-bit WEP, WPA-PSK, WPA, WPA2 Encryption to protect the wireless data transmissions
- Equipped with four LAN ports (10/100M) and one WAN port (10/100M), Auto-MDI/MDI-X supported
- QoS support
- Allows you to monitor the router's status such as: Active DHCP Client, Security Log and Device/Connection Status
- Easy to use Web-based GUI for configuration and management purposes
- Remotes Management allows configuration and upgrades from a remote site (over the Internet)
- DHCP/PPPoE/PPTP/L2TP/Fixed IP allocation
- MAC/IP filter access control, URL blocking
- SPI firewall + DoS prevention protection
- Supports UPnP function

SPECIFICATION
Product 54Mbps Wireless Broadband Router

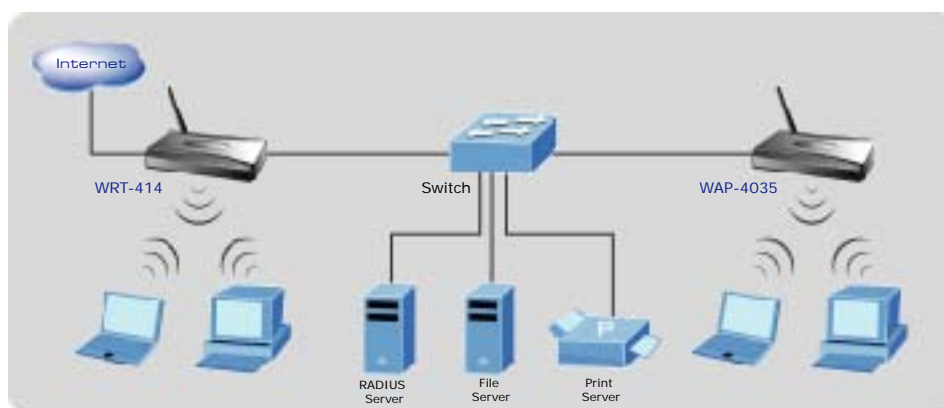
Model	WRT-414
Standard	IEEE 802.11g/802.11b (Wireless), IEEE 802.3 (Wired)
Frequency Band	2.400~2.4835GHz
Transfer Rate	802.11g: 54/48/36/24/18/12/9/6Mbps 802.11b: 11/5.5/2/1Mbps
Modulation	OFDM@54Mbps, CCK@11/5.5Mbps, DQPSK@2Mbps and DBPSK@1Mbps
Radio Technology	Direct Sequence Spread Spectrum (DSSS)
Antenna	Detachable dipole antenna
Operating modes	Access Point Station - Ad-Hoc Station - Infrastructure Bridge - Point to Point Bridge - Point to Multi-Point Bridge - WDS

Channel	FCC: 11 Channels (US, Canada) ETSI: 13 Channels (Europe) ELEC: 14 Channels (Japan)
Transmit Power	18dBm (Typical)
WAN connector	1 x RJ-45 UTP, Auto-MDI/MDI-X
LAN connector	4 x RJ-45 UTP, Auto-MDI/MDI-X
Cabling	Category 5/5e or above, 4-pair
LED Indicators	PWR WLAN WAN: 10/100M, LNK/ACT LAN: 4 x 10/100M, 4 x LNK/ACT
Power	12V DC, 1A
Temperature	0 ~ 55 degree C (Operating)
Humidity	10 ~ 90%, non-condensing (Operating)
Dimension	193 x 93 x 28 (mm)
Weight	285g
Emission	FCC class B, CE-mark

APPLICATIONS
Secured WLAN with Internet Connection

To get the benefit of high-speed wireless networking to all residential and office users, the WRT-414 is an ideal solution. Locate the WRT-414 at the central point in the office or home then connect it to an ADSL/Cable modem.

A Notebook or a remote desktop can be easily connected to the Internet by installing the WL-3564 or WL-8314 54Mbps wireless adapter. Furthermore, the WPA mechanism of the WRT-414 can effectively prevent your information from eavesdropping by unauthorized users.


ORDERING INFORMATION

WRT-414	54Mbps Wireless Broadband Router
----------------	----------------------------------